

Auburn Union School District

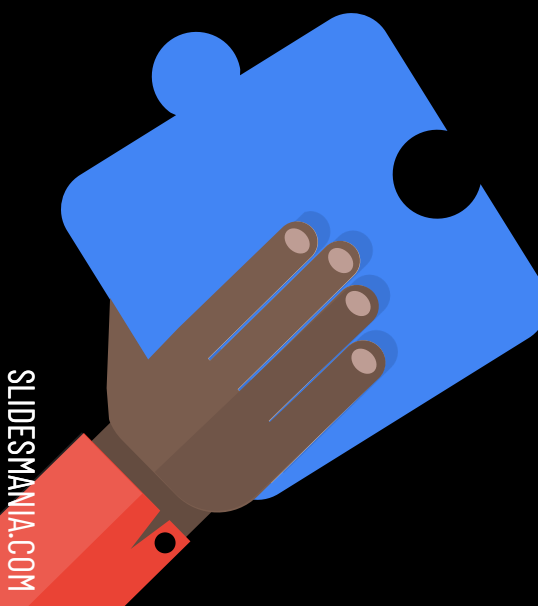

We place each child at the heart of every decision

Superintendent's Reopening Update: Moving to Phase 3

Board of Education
Regular Meeting
November 18, 2020



Guiding Principles

- **Safety**-- *Guided by Research and Science*
 - Planning is based on current public health guidelines and are subject to change, which may lead to Hybrid Models, Distance Learning or loosening of guidelines and return to full-time in person instruction officials to ensure health and safety of students, staff and the community
 - **Equity**-- *Propel and Expand Equity*
 - Equitable outreach, services, and supports for all students and families
 - **Flexibility** -- *Reimagine, Rethink, and Redesign*
 - Expect Change and expect school to look different
 - Empower teachers, staff, and administrators to innovate
- 
- 

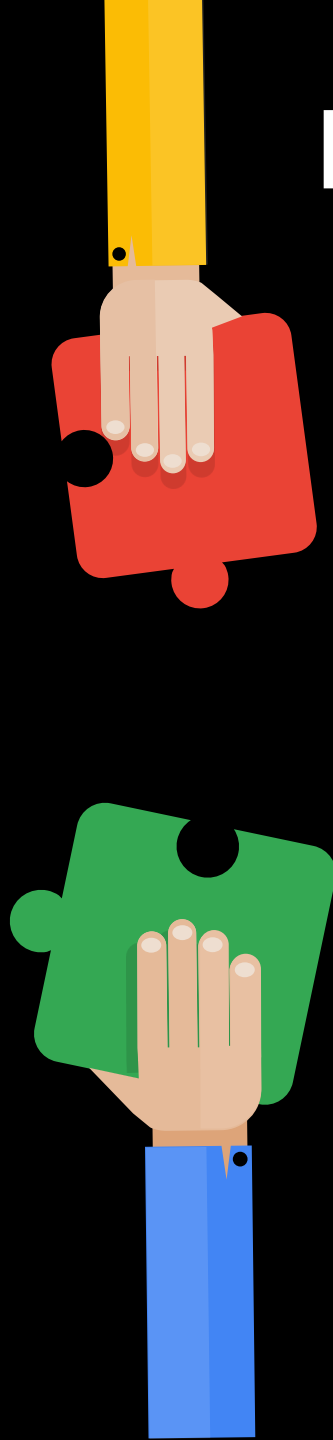
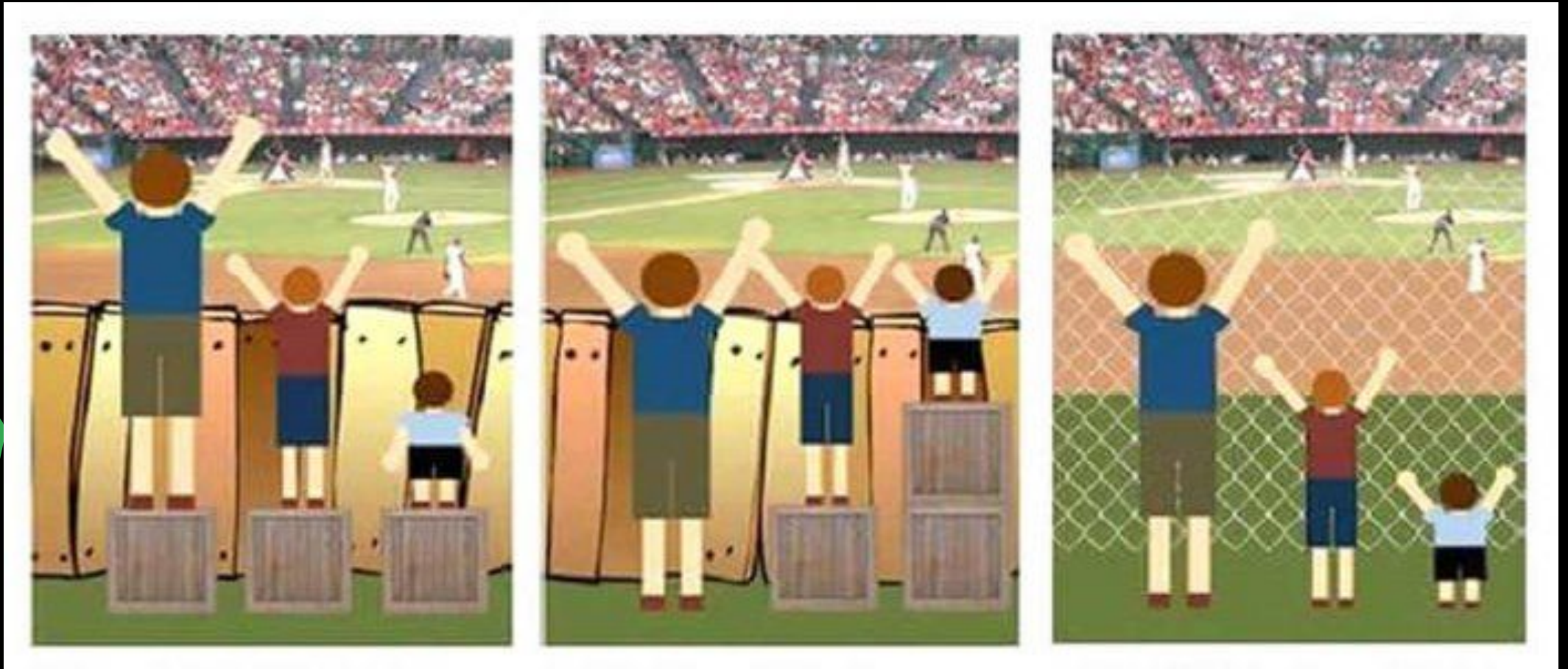


Guiding Principles

- **School Culture** -- *Inclusive, Caring, and Supportive*
 - Set high expectations for all students
 - Quality teaching and learning regardless of modality - in-person, online, or a blend of the two
 - Support all students' social and emotional needs
- **Communication** -- *Consistency and Transparency*
 - Timely, consistent communication to all stakeholders

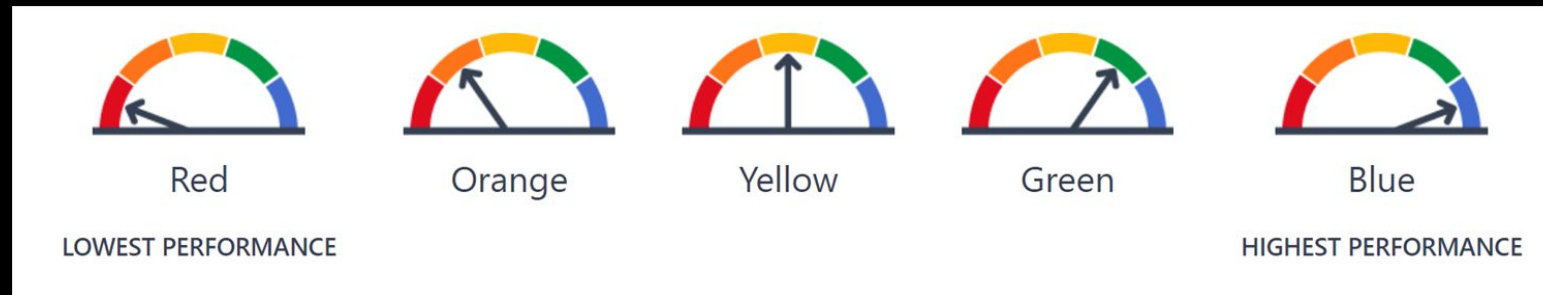


Equity Lens



Equity Lens

The colors highlighted next to each districts scores represent the CA Dashboard colors on California’s accountability and continuous improvement system and provides information about how districts and schools are meeting the needs of California’s diverse student population. It is a color-coded system Red, Orange, Yellow, Green and Blue.



2019 Data	ELA	Math	Poverty	Students with Disabilities	ELL
State	51%	40%	61%	about 12%	19%
Auburn	38%	35%	59%	17%	18%
Bowman	72%	57%	31%	not listed on CDE	4%
Placer Hills	61%	55%	33%	13%	0.4%
Loomis	73%	67%	20%	9%	3%

Where We Have Been



Shifted to
Distance
Learning



Reopening Plan
presented to staff,
Board of Trustees,
families and
Community



Governor Newsom
announced Placer
County schools will
start 2020-2021
school year in
Distance Learning
Format



Updated
Reopening Plan
presented to
staff, Board of
Trustees, families
and Community

Where We Have Been



First Day of
School in
Distance
Learning Format



In-person
learning
announced for
all Placer County
Schools



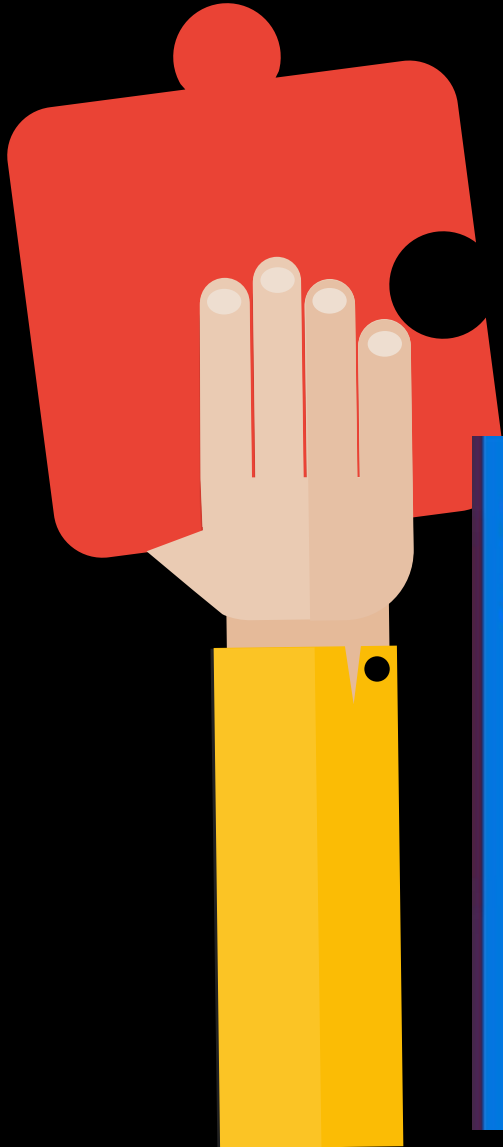
Direction given to
Superintendent
from Trustees to
open no later than
October 19 in
phases beginning
with a Hybrid
Model



Hybrid Model
commences



AUSD has developed and implemented comprehensive reopening plans and protocols following local and public health department guidelines



Measures*	Higher Risk ———> Lower Risk of Community Disease Transmission			
	Widespread Tier 1	Substantial Tier 2	Moderate Tier 3	Minimal Tier 4
New cases**/100,000 population per day (7 day average; 7 day log)	>7	4-7	1-3.9	<1
Positive tests (%) (7 day average; 7 day log)	>8%	5-8%	2-4.9%	<2%

Source: California Department of Public Health (Covid19.CA.GOV)
 Chart by Yuxuan Xie

EdSource

AUSD Cases

- Placer Health reported the number of cases attributed to in person learning is low, our numbers would concur and has no issue with schools increasing instructional day
-
- 393 Students in Distance Learning including AVVA
- 1345 in Hybrid in person model
- Since being open:
 - Staff = 2 positive, 4 close contact
 - Students = 7 positive, 35 close contact
- Positive Staff Cases = .01%
- Positive Student Cases = .005%
- Close Contact Staff = .02%
- Close Contact Student = .03%
- Positive Staff and Student = .006%
- Close Contact Staff and Student = .03%





English Family Survey Data About Phase 3

- About 44% indicated they want 5 days a week with regular bell schedule
- About 24% indicated they wanted 5 days a week with either PLC, Shortened or Minimum Day bell schedule
- 9% indicated Cohort C only
- The rest were a variety of “other” options





Spanish Family Survey Data About Phase 3 (17 responses)

- About 68% indicated they want 5 days a week with regular bell schedule
- About 24% indicated they wanted 5 days a week with either PLC, Shortened or Minimum Day bell schedule
- 12% indicated Cohort C only
- 12% indicated a variety of “other” options

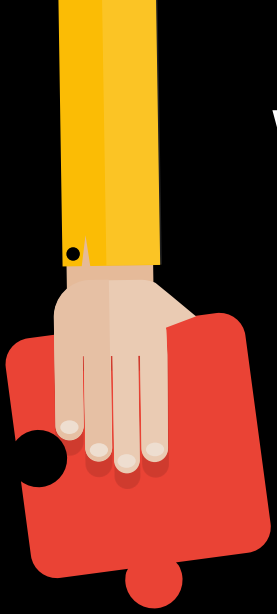


Staff Survey Data About Phase 3

- About 13% indicated they want 5 days a week with regular bell schedule
- About 60% indicated they wanted 5 days a week with either PLC, Shortened or Minimum Day bell schedule
- 9% indicated Cohort C only
- The rest were a variety of “other” options

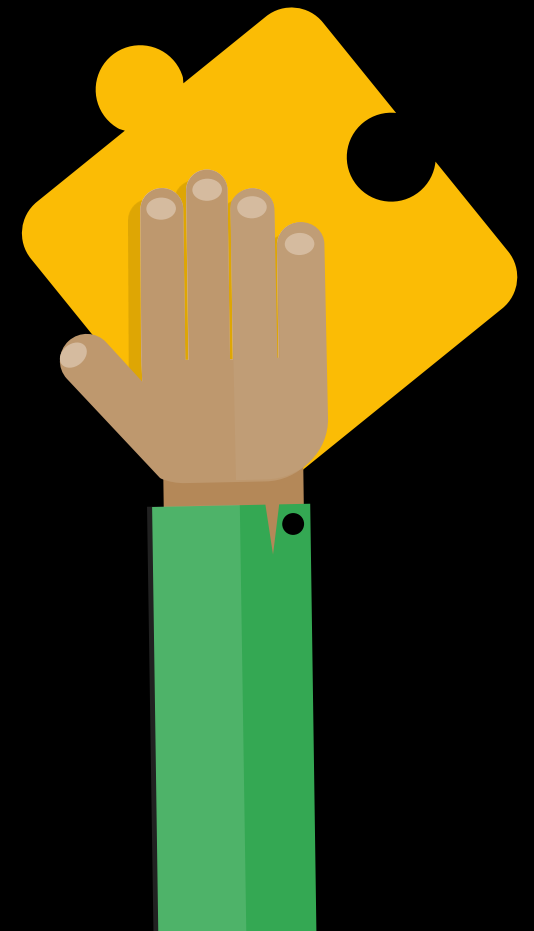
What Does The Survey Data Tell Us?

- About 52% of families responded
- About 58% of staff responded
- 113 Duplicate family reponses
- There wasn't a simple majority (50% or more) of families that wanted to return to in person instruction 5 days with a regular bell schedule. **There was a majority of families that wanted to return to a modified day schedule 5 days a week.**
- **The majority of staff wanted to return to in person instruction 5 days a week with some form of modified schedule.**
- Based on this data, input from the reopening committee, Placer Health data, data on what other Placer County school districts are doing, and a myriad of other data points, **administration is recommending a Phase 3 model of a modified day.**



What is a Modified Day?

- All students on campus
- School starts in the morning at regular start time
- Increased instructional time
- Students leave before lunch
- Reduced co-mingling of Cohorts
- Measured transition to full day instruction
- Increased support services for all students
- Increased individual attention for Cohort C students



Instructional minutes more than double with a modified day schedule

	Hybrid	Modified	Full Day
TK	AVCC 470 SR 440 RC 520	1025	AVCC 1175 SR 1240 RC 1300
K	AVCC 470 SR 490 RC 560 AE 440	1025	AVCC 1175 SR 1225 RC 1560 AE 1100
1-3	540	1350	AVCC 1490 SR 1490 RC 1525 AE 1490
4-5	550	1350	1535
6-8	570	1350	1605

Next Steps to Transition to Phase 3

- Receive direction from Board of Trustees
 - Option A: Transition to Phase 3 with regular bell schedule
 - Option B: Transition to Phase 3 with a modified bell schedule
 - Option C: Other
- **Staff Recommendation: Option C Other -- Pause on transitioning to Phase 3 until after winter break**
 - Monitor Placer County health data/case rates and collaborate with Public Health Department
 - Actively engage families/staff to stay safe and stay open
 - Add transitioning to Phase 3 as a discussion item to December's regular board meeting
 - Continue to work and plan for full day instruction





Thank You!